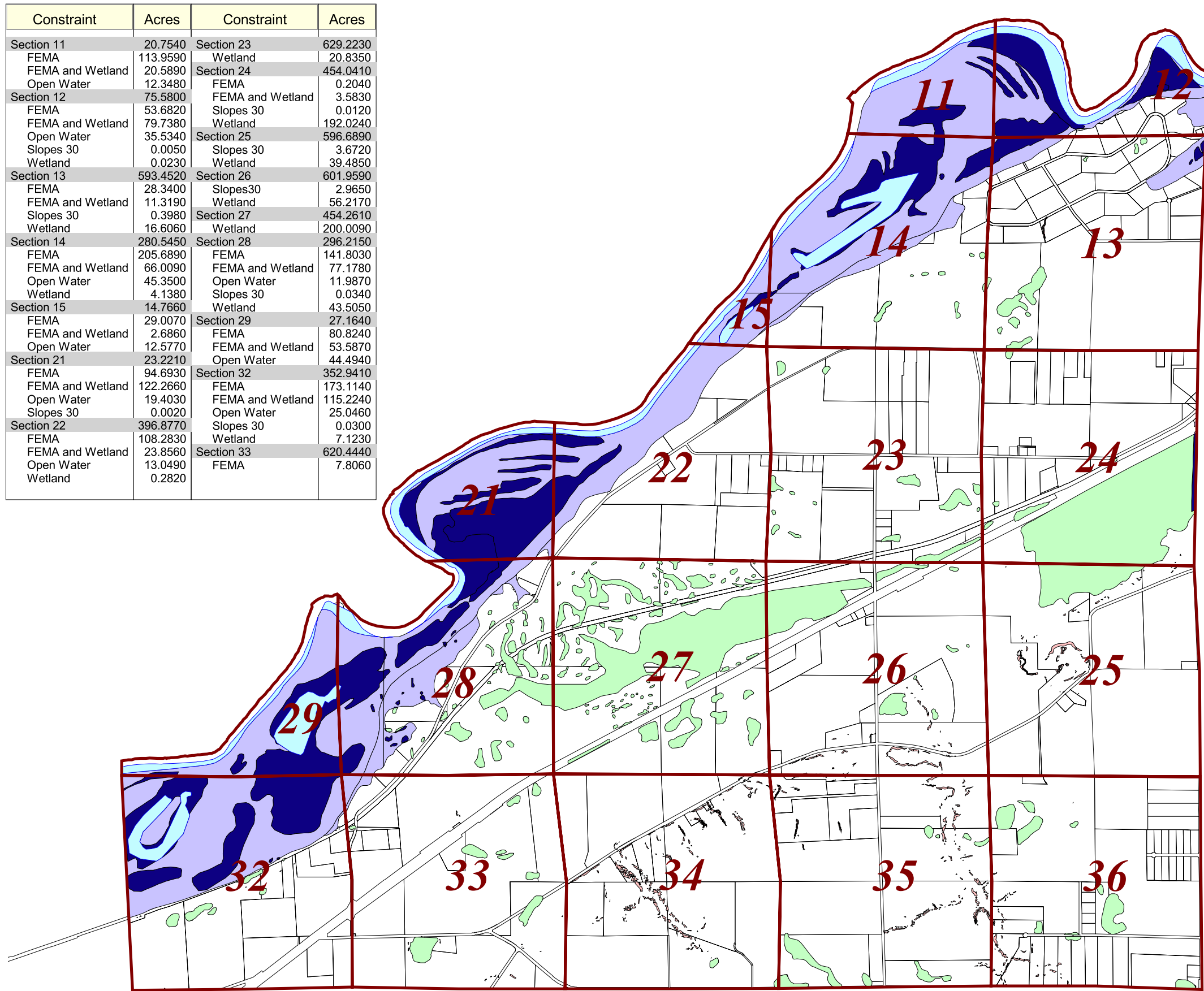


Constraint	Acres	Constraint	Acres
Section 11	20.7540	Section 23	629.2230
FEMA	113.9590	Wetland	20.8350
FEMA and Wetland	20.5890	Section 24	454.0410
Open Water	12.3480	FEMA	0.2040
Section 12	75.5800	FEMA and Wetland	3.5830
FEMA	53.6820	Slopes 30	0.0120
FEMA and Wetland	79.7380	Wetland	192.0240
Open Water	35.5340	Section 25	596.6890
Slopes 30	0.0050	Slopes 30	3.6720
Wetland	0.0230	Wetland	39.4850
Section 13	593.4520	Section 26	601.9590
FEMA	28.3400	Slopes30	2.9650
FEMA and Wetland	11.3190	Wetland	56.2170
Slopes 30	0.3980	Section 27	454.2610
Wetland	16.6060	Wetland	200.0090
Section 14	280.5450	Section 28	296.2150
FEMA	205.6890	FEMA	141.8030
FEMA and Wetland	66.0090	FEMA and Wetland	77.1780
Open Water	45.3500	Open Water	11.9870
Wetland	4.1380	Slopes 30	0.0340
Section 15	14.7660	Wetland	43.5050
FEMA	29.0070	Section 29	27.1640
FEMA and Wetland	2.6860	FEMA	80.8240
Open Water	12.5770	FEMA and Wetland	53.5870
Section 21	23.2210	Open Water	44.4940
FEMA	94.6930	Section 32	352.9410
FEMA and Wetland	122.2660	FEMA	173.1140
Open Water	19.4030	FEMA and Wetland	115.2240
Slopes 30	0.0020	Open Water	25.0460
Section 22	396.8770	Slopes 30	0.0300
FEMA	108.2830	Wetland	7.1230
FEMA and Wetland	23.8560	Section 33	620.4440
Open Water	13.0490	FEMA	7.8060
Wetland	0.2820		

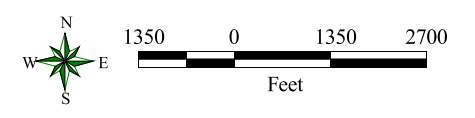


St. Lawrence Township Potential Development Constraints

Legend

- Potential Development Constraints
- FEMA
 - FEMA and Wetland
 - Open Water
 - Slopes 30
 - Wetland
 - Parcels

Map Date: August 8, 2005



Scale: 1 inch = 1800 feet
R.F.: 1 : 32,400

